



Range Radar Sensor for Touchless Push-Plates

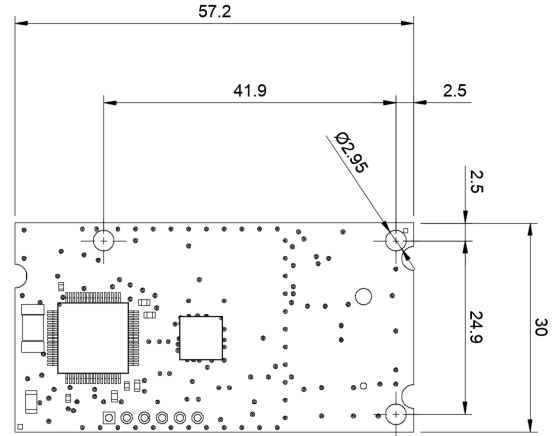
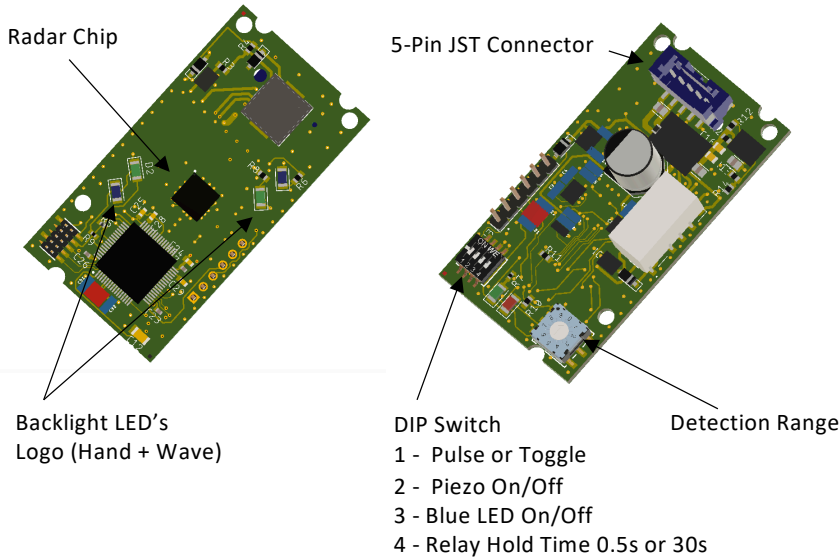
SDR.676.01

- Range detection
- Visual indicator - LED blue and green
- Acoustic signal - Piezo speaker
- Range adjustment (1" to 3ft)
- Dry contact relay output
- 12 to 24 VAC/DC



| SDR.676.01 Specifications | |
|---------------------------|--|
| Transit frequency | 60GHz (FCC/IC compliant) |
| Antenna Angles | 40° x 80° |
| Output power | <10 dBm |
| Power consumption | < 50 mA |
| Operating Voltage | 12 to 36 VDC / 12 to 28 VAC |
| Function Indicator | Blue LED - Position Indicator Green LED - Detection Indicator Red LED - Function Indicator (Error Codes) |
| Output | Dry contact normally open (N.O.) or normally closed (N.C.) |
| Relay | Change over contact: 24 VDC / 48 VAC |
| Relay Hold Time | 0.5s or 30 seconds |
| Reaction Time | < 100ms |
| Detection Range | 1" to 3ft [25mm to 1000mm] adjustable |
| Degree of Protection | IP 54 |
| Relative Humidity | Max. 90% not condensing |
| Temperature Range | -30°C to +60°C |
| Dimensions | PCB: 57.2mm x 30mm |
| Wire / Connection | 5-Pin JST Connect / Cable Length 1ft [300mm] |

PCB and Interface Components



Accessories



Faceplates:

- Polycarbonate (PC)
- Glass
- Custom Logos
- Custom Colors
- Standard black or white
- Geometry to match DECORA design



Harness:

- 5-pin JST Connector
- Wire length 1ft (300mm)

Application Example: Single Gang Touchless Push-Plate - DECORA



Front View



Side View



Back View

